

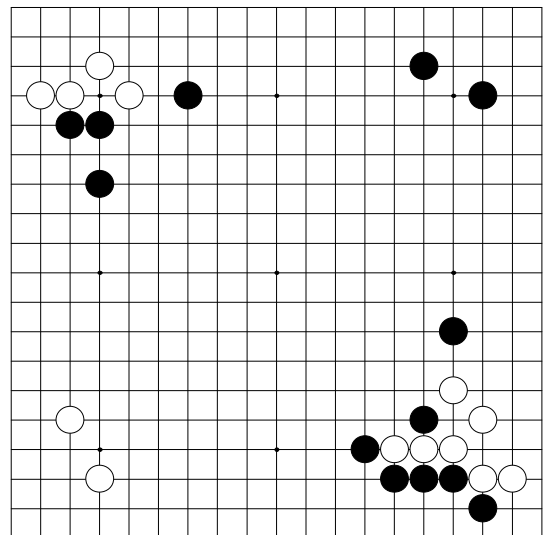
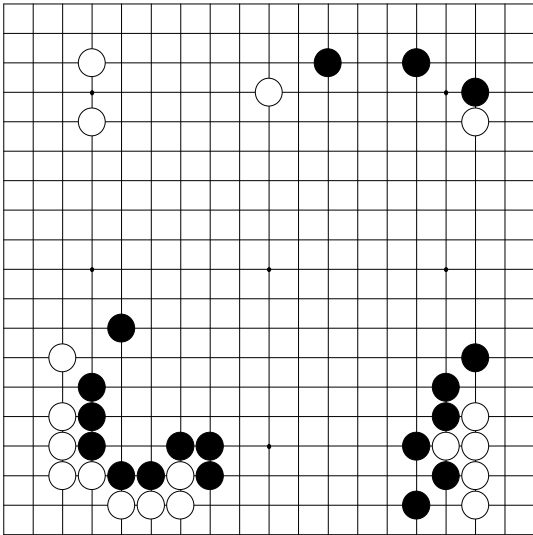
Club de Go de Paris

**Cours du Lescot
Saison 2005-2006
Xie Wei Dong**

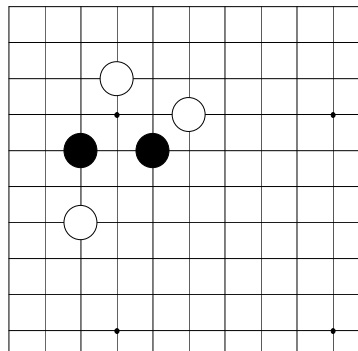
1^{ère} séance

Le trait est à Noir dans tous les problèmes

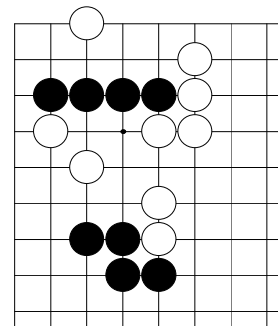
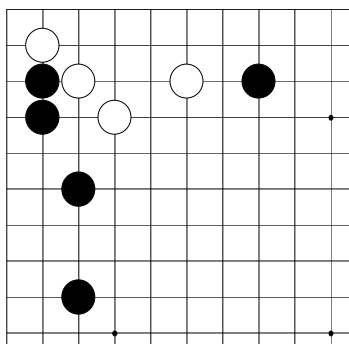
Problèmes de fuseki



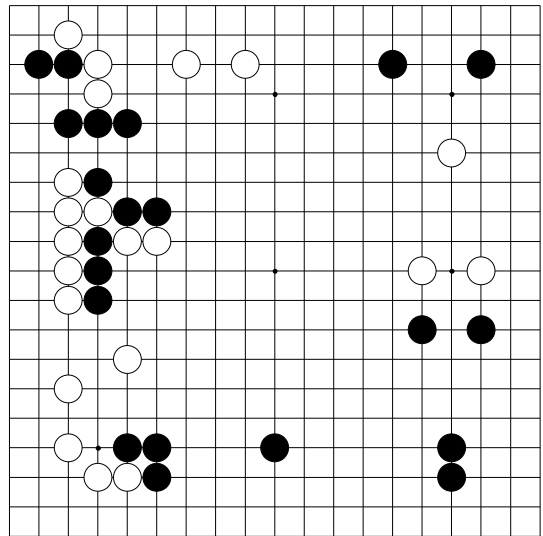
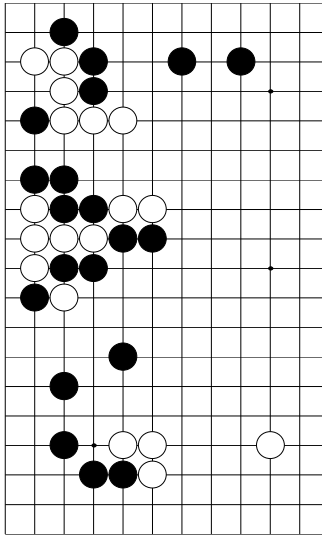
Problème de joseki



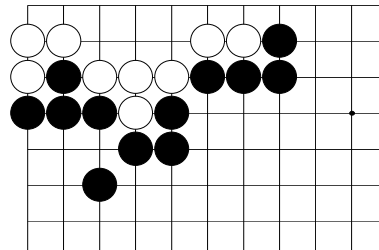
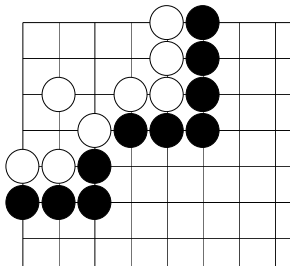
Problèmes de tesuji



Problèmes de chuban



Problèmes de yose



Problèmes de tsumego

